



CUBE 56-70



DieSEL fuel dispensers

CUBE pumps have been developed for the distribution of Diesel fuel in non-commercial uses. Vehicles can be refuelled quickly and safely with CUBE fuel pumps. Options are available for measuring and recording the quantities dispensed. The flow-meters mounted on CUBE pumps have sturdy mechanical readout systems whose reliability and easiness to use have been proved by time.

Simple and versatile, CUBE pumps can also be installed on drums, thanks to their 2" quick couplings.

Performance Specifications

- Flow-rate (max): up to 56 l/min (70 l/min Cube DC).
- Continuous operation at 230 V.
- Noise level: below 70 dB.
- Precision of flow-meter: ±1%.

Technical Features

- Self-supporting stamped-plate structure, treated against corrosion and paint-finished,

ready to install.

- Self-priming vane pump, fitted with bypass valve, mounted on antivibration supports. Mechanical seal.
- Self-ventilated enclosed motor (IP 55), single-phase versions provided with heat protection.
- Intake filter for pump protection.
- Nutating-disk meter with mechanical readout system.
- Automatic pump nozzle complete with flexible hose and swivel connection.
- In-built nozzle-holder provided with pump start/stop lever.

Available with:

DC versions (available)



CUBE 56

Flow rate **56** l/min

Accuracy +/- **1%**

CUBE 70

Flow rate **70** l/min

Accuracy +/- **1%**



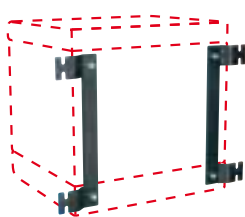
Pedestal:

- Red Code: F1093640A
- Blue Code: F10936500



Kit wall support

Code: R12737000



Kit H2O filter

Code: F00611A00
 70 l/min
 2 cartridge



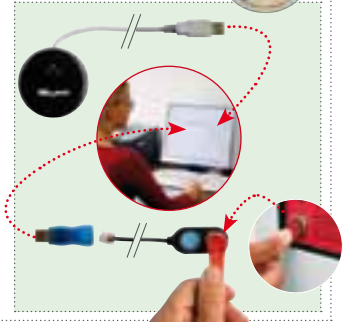
2" Quick coupling

Code: R08930000



SelfService Desk

Software for MC models optional



Code	Description	Pump mod.	Flow rate		AC Volt/Hz	DC Volt	Watt	Meter	I	Color	Nozzle	Weight Kg	Packaging mm
			l/min	gal/min									
00057500C	Cube 56	Panth 56	56	15	230/50	-	360	K33	1" BSP	●	A	21	400x400x460
000575A20	Cube 56 100/50-60	Panth 56	68	18	100/50-60	-	550	K33	1" BSP	●	A	21	400x400x460
F0059100A	Cube 70/33 M	Panth 72	70	18	230/50	-	550	K33	1" BSP	●	A	21	400x400x460
00057800C	Cube 56 230/60	Panth 72	68	18	230/60	-	550	K33	1" BSP	●	A	21	400x400x460
F00575340	Cube 56/33 110/50	Panth 56	56	15	110/50	-	500	K33	1" BSP	●	A	21	400x400x460
00057900A	Cube 56 120/60	Panth 56	56	18	120/60	-	360	K33	1" BSP	●	A	21	400x400x460
F0057600C	Cube 56 DC 12V	Panth 56	56	15	-	12	500	K33 GAL	1" NPT	●	A	21	400x400x460
F0057700C	Cube 70 DC 24/12V	Panth DC	70	18	-	24	500	K33	1" BSP	●	A	21	400x400x460
		Panth DC	35	9	-	12	360	K33	1" BSP	●	A	21	400x400x460

↳ All models without pedestal (optional)

Upon request it is available with different tension and 60 Hz frequency